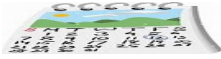


Diary Dates 2026



MONDAY 23RD FEB

Launch of **20,000** Days at School Challenge

TUESDAY 3RD MARCH

Reading Rivers Workshop - Fun Reading Project from 9am

THURSDAY 5TH MARCH



World Book Day - Dress up and Book Swap

Wednesday 11th - Friday 13th MARCH

Mothers Day Lunches



TUESDAY 24TH MARCH

WEDNESDAY 25TH MARCH

Year 1 - -EASTER AND SPRING CELEBRATION ASSEMBLIES

FRIDAY 27TH MARCH

Golden Assembly and Rotary Shield

NON-UNIFORM Day

Good to be Green Activities

Easter Egg Hunt

FRIDAY 27TH MARCH

Last day of term—School closes at 1.45pm

A Message from Mrs Hammond and the Team

The 20,000 Day Challenge

From Monday 23rd February we will be introducing the 20,000 day attendance challenge.

Each week we will add the total number of days attended by the children. As we reach each 5000 day milestone we will celebrate with a whole school reward.

Our Attendance Ambassadors will track and record the days and will choose our rewards. When we reach our first 5000 days, everyone will enjoy a movie and popcorn afternoon!



We need **everyone** one to be in school **everyday, on time!** This is everyone's **CHALLENGE.**



PLEASE REMEMBER!

We do not run an Easter bonnet competition due to the cost of making for parents.

However, we will be holding our Egg Hunt and design competition. Both of which all children

The League of Learning Superheroes





SPOTLIGHT ON SUCCESS

What's been happening at AIS



Thank you to everyone who attended our parent **consultation meetings** on Thursday 12th February. Over 90% of children's families met with their class teacher to find out how they are doing.

Over 194 families completed our annual Parent Survey. Results show your overwhelming support for our school and that your children are happy and feel safe.

This term we will again be sharing lots of information about our expectations, your child's Personal Development and what your topics we will be learning about.

Questions - 194 Completed (0.5 = 1 response)	Strongly Agree / Agree %
My child is happy at this school	98.5
My child feels safe at this school	98.0
The school makes sure its pupils are well behaved	98.5
The school encourages and supports my child to attend every day, on time.	99.5
The school makes me aware of what my child will learn during the year.	98.0
When I have raised concerns with the school they have been dealt with properly	97.0
The school has high expectations for my child.	95.5
My child does well at this school.	98.5
The school lets me know how my child is doing.	100
There is a good range of subjects available to my child at this school.	97.0
My child can take part in clubs and activities at this school.	95.0
The school supports my child's wider personal development.	95.0
I would recommend this school to another parent.	98.5